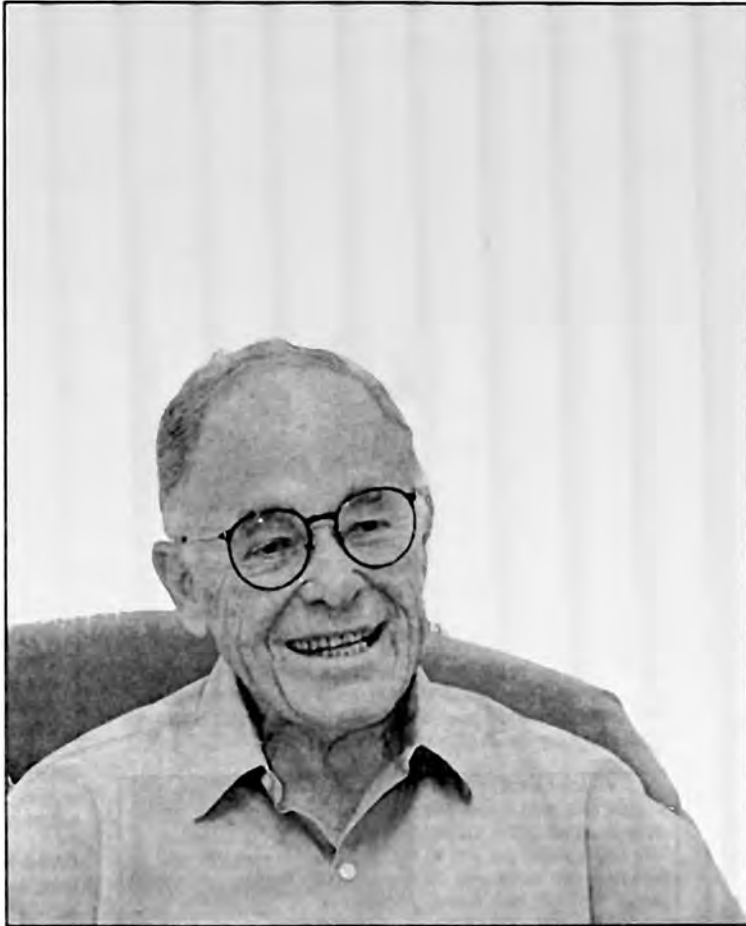


He's all heart

Society lauds LW Foundation co-founder



David E. Caballero/*The News*

Sid Hartstein has been named Leisure Worlder of the month for May by the Leisure World Historical Society.

By Cheryl Walker
TheNews

Two years ago a group of Leisure World residents got together with Social Service staff to create a charitable organization whose sole purpose would be to help their frail elderly and disadvantaged neighbors in emergencies - financial, personal, emotional or medical.

Sid Hartstein was one of the five founding members of the Leisure World Foundation and, serving as director, spearheaded the arduous task of putting together the group's bylaws, a key requirement for obtaining state-certification as a non-profit 501(c)3 corporation.

For this and other accomplishments within the Foundation and the community, the Historical

Society named Hartstein its Leisure Worlder of the Month for May.

Although Hartstein says he doesn't know the reasoning behind the Society's choice for May ("I surmise it must be one of my projects"), Foundation colleague and former Golden Rain President Peggy Kermer applauds the decision.

Kermer says that Hartstein is "a capable worker - whether writing bylaws for an organization or planning detailed programs - and always willing and able to do more than his share."

See HEART, page 20

Ceremony facts

Who: Sid Hartstein
What: Leisure Worlder of the Month for May
Where: Clubhouse 6
When: 10 a.m., Wednesday, May 5
Sponsor: Leisure World Historical Society.

HEART

From page 1

Foundation President Tom Jorde agrees, noting that over the years Hartstein (whom he characterizes as "extremely intelligent, a people person, reliable, a doer, contended and possessing of a fine sense of humor") has quietly served Leisure World through many organizations in as a "one-man committee.

"Sid doesn't give up easily, he'll pursue a cause with the tenacity of a bulldog until results are realized - and the Leisure World Foundation is indebted to him for his many and valued contributions."

Social Service Director Gemma Heffernan says she considers the Society's honor long overdue and credits Hartstein, Jorde and former Golden Rain Director Milt Adamson as the catalysts for the development of the Foundation.

"Working closely with the Social Services Department, he (Hartstein) became aware of the degree of frailty and need of some residents and he soon became a champion for those who have no voice because of their physical or mental incapacity . . . never one to seek the limelight, he is content to let others shine while he can be depended on to carry much of the workload . . . we are privileged to have a man of Sid's integrity, knowledge and dedication in our community."

Background: Sid Hartstein

was born in New Jersey. After receiving his bachelor's degree at Rutgers University and his masters at Columbia, both in chemistry major, he became chief chemist at Nixon Nitration Works in New Jersey; chief of research and development at Federal Telephone & Radio's Intelin Division in New Jersey; owner of Gustave Crupsen Corporation Silver-smith and Plating in New York; and estate planner at Connecticut General Insurance in New Jersey and Hartstein Associates in New Jersey.

His community service involved participation in the Highland Park, N.J. mayor's advisory committee, Rutgers alumni programs, Leisure World's Community Association, Leisure World's long-range planning group Project 21, the Tennis Club, Toastmasters and Temple Judea.

Hartstein said he wasn't as involved in community activities prior to his retirement 11 years ago to Leisure World when he started to take on various projects such as water conservation, gun control, Leisure World's Transportation Brochure and most notably the Foundation.

The impetus for the foundation was the recognition that although the majority of residents were active and

financially stable, some older residents who'd lived in the community for many years, had limited incomes were frail and unable to afford the on-going costs of caregivers help. Yet they wanted to continue to live in their own homes.

Since government and health maintenance organization programs reduced or only offer in-home services on a limited basis, the idea arose of a charitable group of, by and for Leisure Worlders to fill this gap.

(From the start the Foundation made it clear, that it would not try to keep residents in the community who belong in a nursing home or under custodial care.)

The founders; Hartstein, Jorde, Diane Howard (a non-resident business executive who volunteered her financial expertise), Shirley O'Connor and Ethel Adamson, decided to make that happen. They elicited the help of lawyers to file the necessary papers pro bono, and gathered other residents interested in becoming charter members.

All of the latter remain on the Foundation's Board, which has been augmented with newcomers and includes Jane Slavin, Molly Blank, Mary Balcom, Ellen Dalrymple, Sam Kirbens, Charles Little, Burton

Taubman, Mary Wayman Eleanor Whitesell, Kermer, George Ratner and Bert Black.

But, Hartstein points out that all of the Foundation's contributors (both individuals, clubs, businesses and others), more than 1,000 strong, are part of its family and committed to maintain their needy neighbors' quality of life - be it through food, medicines, paying utility bills or temporary nursing care, transportation, home-delivered meals or scholarships to the Laguna Hills Adult Day Health Care Center.

Hartstein says the Foundation's ultimate goal is that no one who needs help will be turned away and he hopes residents will consider adding a codicil to their will endowing the Foundation.

Hartstein notes that the program has had its critics who think it has no place in an "active, retirement community."

But, he explains, "people helping people" has always been his dream with regard to the Foundation. "We can't take care of the world, but we can take care of Leisure World."

Anyone interested in learning more about the Foundation can call a member of its board or send contributions to the organization at P.O. Box 3279, Laguna Hills 92654-3279.